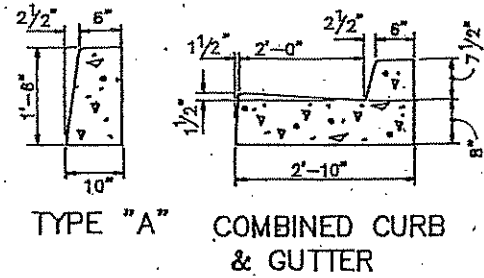
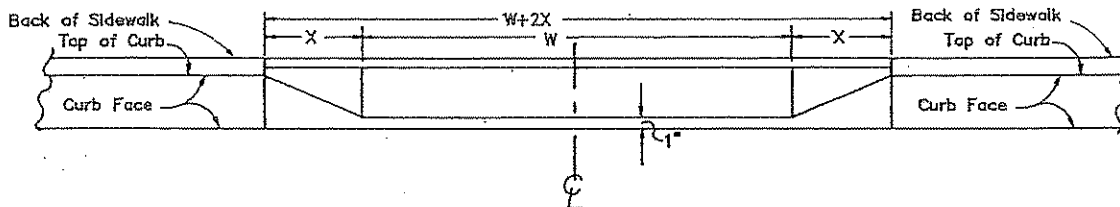
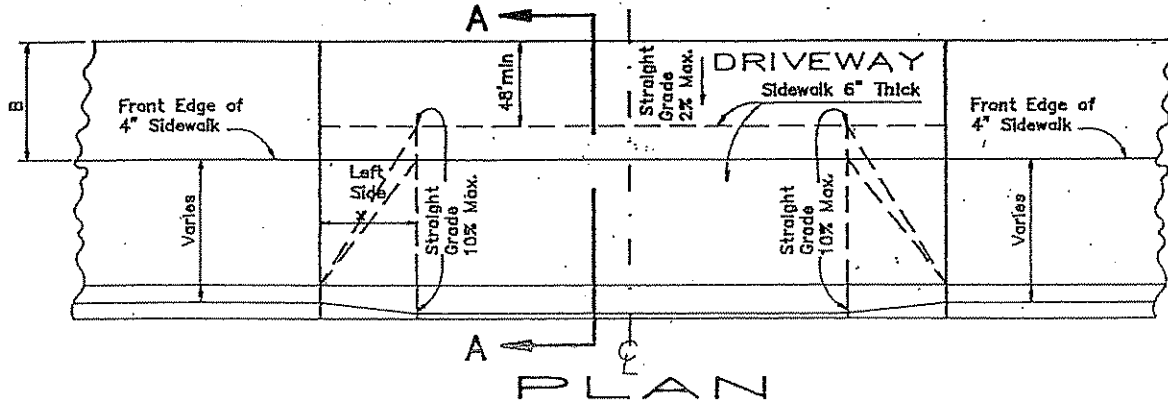


TABLE OF "X" DIMENSIONS		
HEIGHT OF CURB FACE	SINGLE FAMILY & MULTIPLE RESIDENTIAL	COMMERCIAL
6"	2'-0"	3'-0"
7"	2'-4"	3'-6"
8"	2'-8"	4'-0"
9"	3'-0"	4'-6"
10"	3'-4"	5'-0"
11"	3'-8"	5'-6"
12"	4'-0"	6'-0"

TABLE OF "W" DIMENSIONS	
SINGLE FAMILY RESIDENTIAL	10' MIN
MULTIPLE FAMILY RESIDENTIAL	12' MIN
COMMERCIAL	12' ONE WAY 20' TWO WAY 35' MAXIMUM



### TYPICAL DRIVEWAY FOR SINGLE FAMILY, MULTIPLE FAMILY AND COMMERCIAL DRIVEWAYS

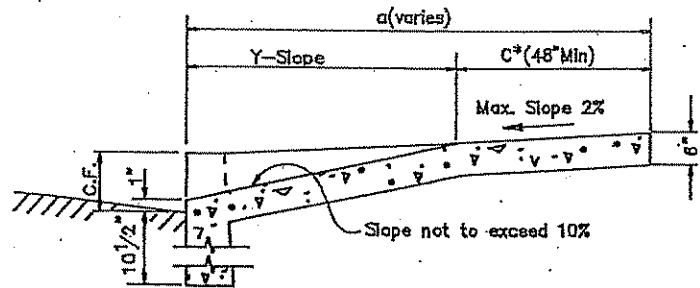


WHERE MAXIMUM SLOPES (10% ON RAMP AND 2% ON DEPRESSED SIDEWALK) CANNOT BE MET BECAUSE OF HIGH CURB OR NARROW SIDEWALK, DEPRESS BACK EDGE OF SIDEWALK UNTIL SAID SLOPES ARE OBTAINED, BUT THE LONGITUDINAL SIDEWALK SLOPES OUTSIDE THE LIMITS OF THE DRIVEWAY TO MEET THE DEPRESSED SIDEWALK SHALL BE NOT MORE THAN 6% GREATER THAN THE LONGITUDINAL SLOPE OF THE ADJACENT SIDEWALK.

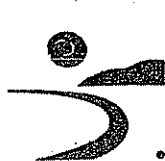
WHERE AN EXISTING SIDEWALK IS LESS THAN 6" IN THICKNESS, THAT PORTION OF SIDEWALK WITHIN THE LIMITS OF THE DRIVEWAY SHALL BE REMOVED, AND REPLACED WITH PORTLAND CEMENT CONCRETE 6" IN THICKNESS AND CONFORMING TO CITY OF SANTA MONICA STANDARD SPECIFICATIONS.

WHEN SIDEWALK IS OFF-GRADE, SIDEWALK SHALL BE REMOVED. NEW SIDEWALK AND DRIVEWAY SHALL BE CONSTRUCTED ON STANDARD SIDEWALK GRADE, SLOPED TO MEET OLD SIDEWALK OUTSIDE LIMITS OF DRIVEWAY. THE LONGITUDINAL SLOPE OUTSIDE THE LIMITS OF THE DRIVEWAY SHALL BE NOT MORE THAN 8% GREATER THAN LONGITUDINAL SLOPE OF THE SIDEWALK ADJACENT THERETO. SEE ORDINANCE No. 456 (CITY COUNCIL SERIES) FOR "W" DISTANCE AND OTHER DATA.

ALL CONCRETE MUST BE 5.5 SACK/CU.YD. READY-MIX AND CURED WITH WHITE PIGMENTED PROCESS.



\* C varies from 48" min to B max



City of Santa Monica  
Department of Public Works

1437 4th Street, Suite 300 Santa Monica, CA 90401  
TEL (310) 458-8721 FAX (310) 393-4425  
e-mail: smengineering@smgov.net

STANDARD DRAWING FOR:  
DRIVEWAY, CURB, AND COMBINED  
CURB AND GUTTER

SUBMITTED BY:

APPROVED BY:

*Del Juan*  
Director of Public Works / City Engineer

DATE: 3-18-2010

DRAWING NO.

SM 5

1 of 1