

**City of Santa Monica
Department of Public Works**

1437 4th Street, Suite 300 Santa Monica, CA 90401
 TEL. (310) 458-8721 FAX. (310) 393-4425
 e-mail : smengineering@smgov.net

**TYPICAL UTILITY
TRENCH DETAIL**

SUBMITTED BY :

APPROVED BY :

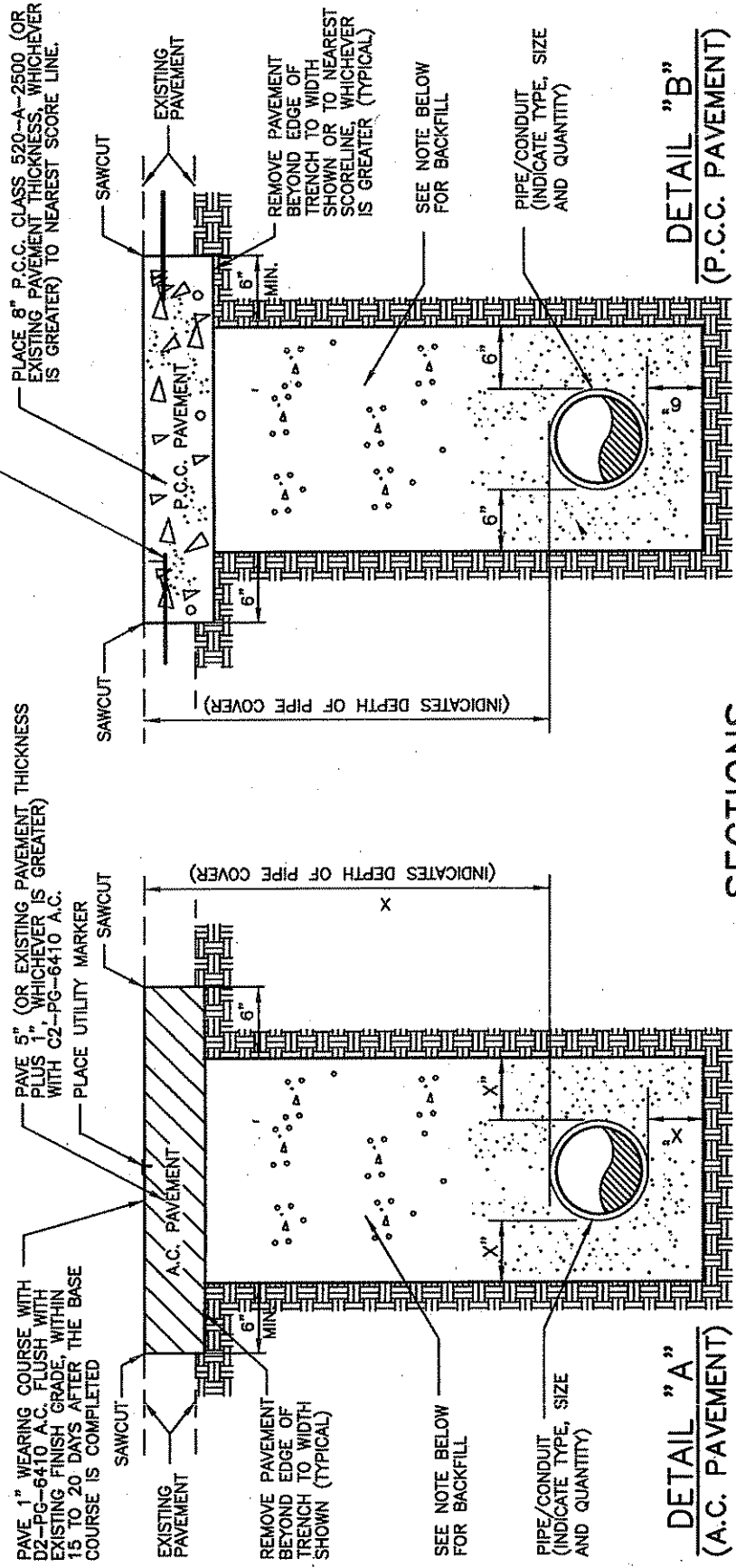
See Secum
City Engineer

DATE : 12/28/2010

DRAWING NO.

SM15

1 OF 1



SECTIONS
NOT TO SCALE

NOTES:

1. ALL BACKFILL SHALL BE MINIMUM 1-SACK SAND-CEMENT SLURRY, CRUSHED MISCELLANEOUS BASE (CMB), DECOMPOSED GRANITE (DG), MECHANICALLY DENSIFIED TO 90% RELATIVE COMPACTION FROM BOTTOM OF THE TRENCH TO 8" BELOW PAVEMENT. THE TOP 8" SUBGRADE SHALL BE COMPACTED TO 95% RELATIVE COMPACTION. CONTRACTOR TO PROVIDE TEST REPORTS AS EVIDENCE FOR PROPER COMPACTION.
2. IF PAVEMENT CRACKS ARE EVIDENT NEAR TRENCH, CONTRACTOR IS REQUIRED TO OVERCUT THESE CRACKS IN FULL PAVEMENT THICKNESS.
3. NEW P.C.C. PAVEMENT SHALL BE DOWELED TO EXISTING PAVEMENT. CONTACT CITY ENGINEER'S OFFICE FOR DOWELING SPECIFICATIONS.

LEGEND:

X = DISTANCES DETERMINED BY UTILITY COMPANIES