

Instructions for Viewing the Santa Monica Downtown Model in a Web Browser

You can view the Downtown Santa Monica model and 360° panoramas in a web browser.

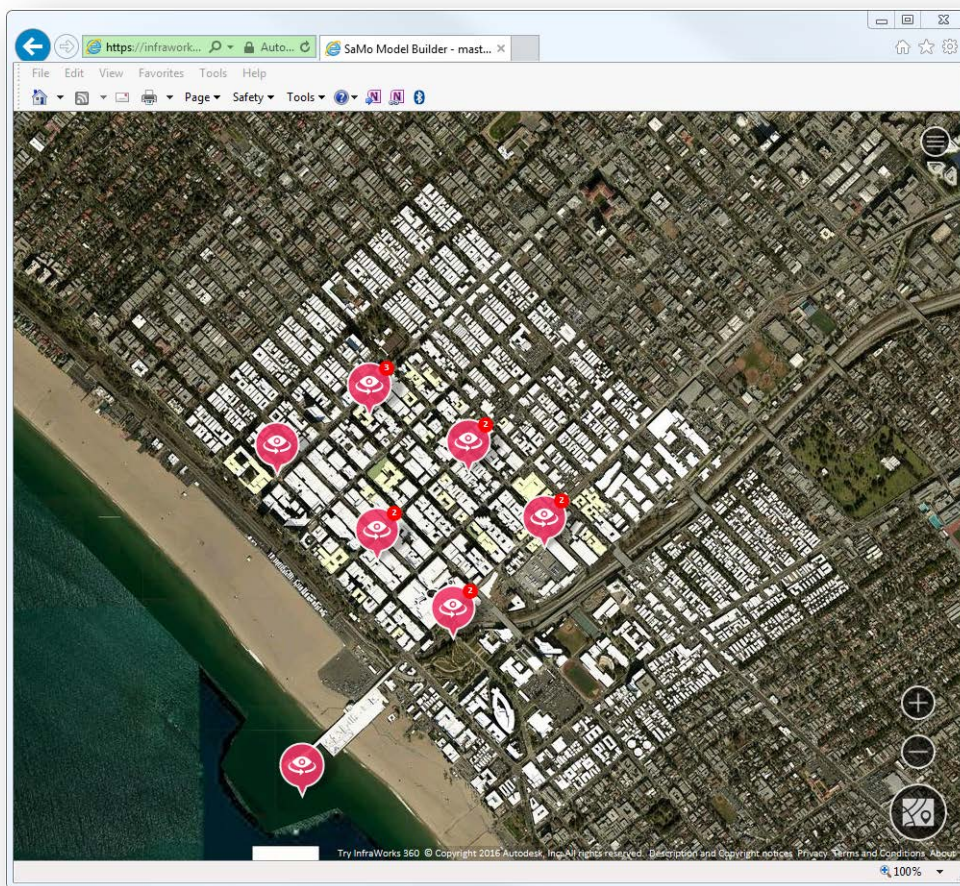
Opening the Model


Click the following link to open the model:


[SaMo Downtown Model](#)

Navigating the Model

The browser displays a rendered view of the model similar to the one below.




- The **model view angle** can be changed:
 -  toggles the viewing angle from a plan view and a birds-eye view.

- The + and - icons control **zoom** in the model view. Zoom-in to separate item clusters or click a specific cluster marker.
- The **360° panorama views** locations are marked with icons:
 -  Panoramas views close to one another are clustered. Click a clustered marker to reveal all markers. Increasing the zoom level also un-clusters markers.

Navigating the Panorama Viewer Window

A panorama opens in a dedicated window.

- **Open a panorama** by clicking on a panorama marker . A panorama preview will open and display the location name. Click on the preview image to open the 360° panorama viewer window.



- **Operate the panorama** using controls at the bottom of the window. Pan left or right, raise or lower the vertical viewing angle, and return to the home position. The + and - icons control zoom.
- **Close the panorama** viewer window by clicking the “X” at the top right of the window.

Note: Some browsers do not fully support panoramas. If you experience any problems please use: Chrome or Firefox.