

# Miles Memorial Playhouse

Santa Monica's Historic Theater



## LIGHT / SOUND / VIDEO / DRAPERY - INVENTORY

### LIGHTING SYSTEM

ETC DIMMER RACK WITH 30, DUAL 20 AMP DIMMER MODULES, 18 AIR-FLOE MODULES within the CEM 96 MODULE. (Cabinet)

- 60 Dimmers with a 20 amp capacity = 2400 Watts per dimmer (MAX)
- 1 @ ETC Express 48/96 Console DMX w/ SVGA Monitor

### INSTRUMENTS

- 12 Source 4 - 26 degree
- 17 Source 4 - 36 degree
- 16 Source 4 - 50 degree
- 14 Altman Fresnel - 6"
- 8 ETC Parnel
- 4 Tri-Color Cyc Box

### ACCESSORIES

- All Instruments have safety cables and gel frames
- We have approx. 15 gobo holders for source 4's
- Stage cable in 10', 15' and 25' lengths. (A couple 50' lengths as well)
- 4 eight foot metal "trees" - two with two foot cross bars

### COMMUNICATION

- 3 @ Clear-Com 1 channel - Beltpack (RS-100A or 501) (1#)

### SOUND SYSTEM

The system is composed of a 16 input mixer, dual CD player, room voicing equalizers, power amplifiers and two main house speakers. It also includes a stage floor monitor system of a pair of wedge speakers, 1/3 octave equalizers and a separate power amplifier. It includes 5 microphone stands and 5 good quality utility microphones.

## SOUND COMPONENTS

- Mackie 16Ch 1642-vlz3 Mixer
- Numark dual disc CD player
- Peavey Architectural Acoustics digitally programmable room voicing EQ master and slave dbx 1/3 octave dual channel monitor EQ
- Yamaha C-series power amplifiers - one 340WPC 2-channel amp for house, and a 160WPC 2-channel amp for monitor
- Two Community CPL two-way 12" speaker enclosures with Custom AMT mounting brackets for house sound
- Two Yamaha Club series 2-way 12" floor monitor speakers for stage.
- AMT custom cabling for eight microphone lines and two speaker lines from booth to stage
- 5 microphone stands
- 5 utility microphones (2 Sennheiser 855, 3 Shure SM58)

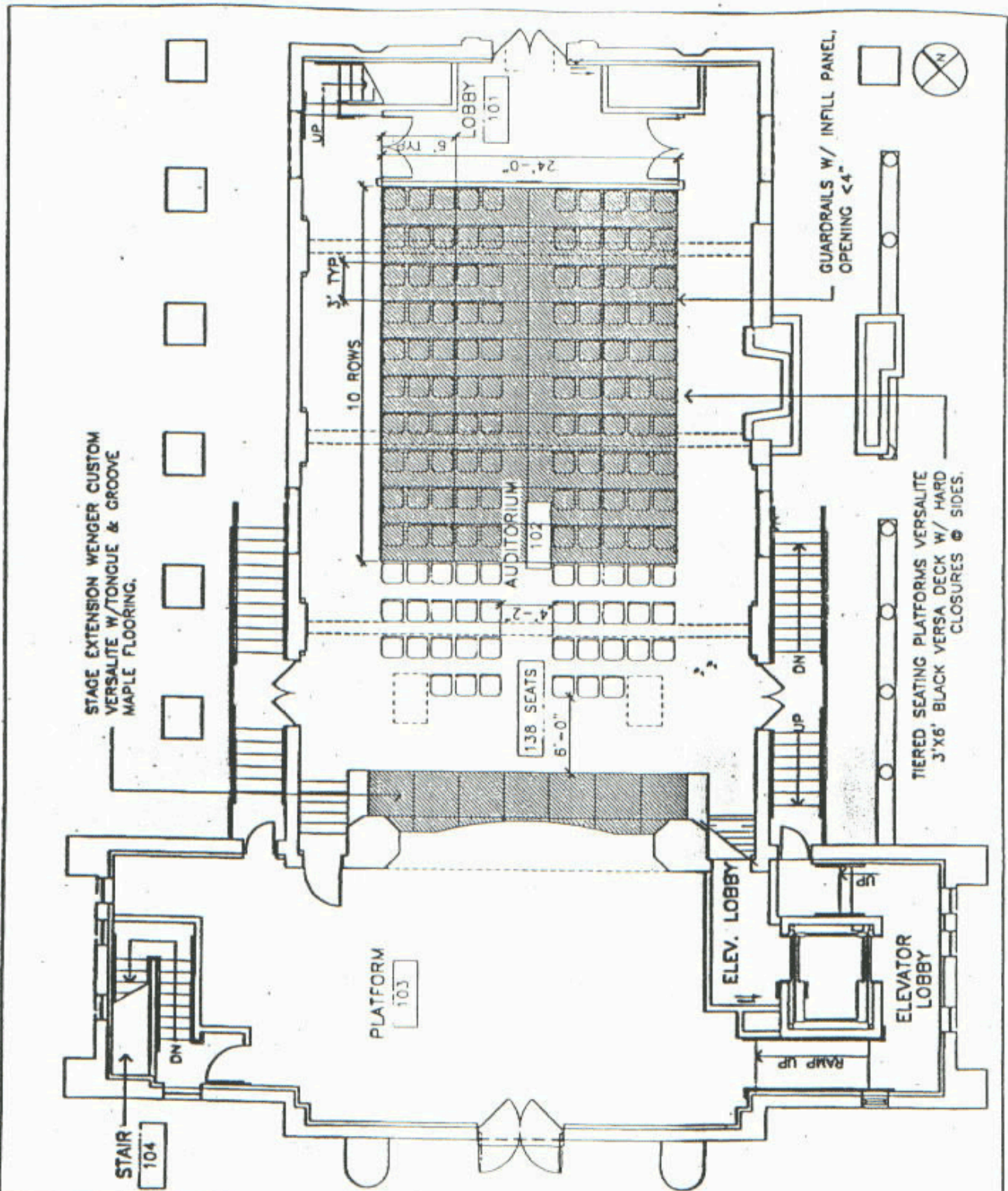
## VIDEO

- Sony 3D Blu-Ray Wifi deck
- LG Blu-Ray deck
- HDMI, S-Video and VGA connections
- Video switcher
- InFocus 5106 5K lumen video projector

## THEATRICAL DRAPERY

- Black velour main curtain and valance
- Mid-stage and upstage bi-part curtains and valances
- Upstage cyclorama. (White – one piece smooth muslin)
- Upstage Scrim. (Black – sharktooth)
- Stage left and stage right light masking curtains
- Elevator hall masking curtain
- Removable mirror masking curtain
- Misc legs and valances

# Miles Playhouse Standard-Type Configuration



**JOHN ASH GROUP**

8822 HOLLYWOOD BLVD./SUITE 600  
 HOLLYWOOD, CALIFORNIA 90028  
 323 788-0890 FAX 323 788-0988

**MILES MEMORIAL PLAYHOUSE  
 CONVENTIONAL STAGE  
 SEATING DIAGRAM**

Santa Monica, California

DATE: 04/13/99

SCALE: N.T.S.

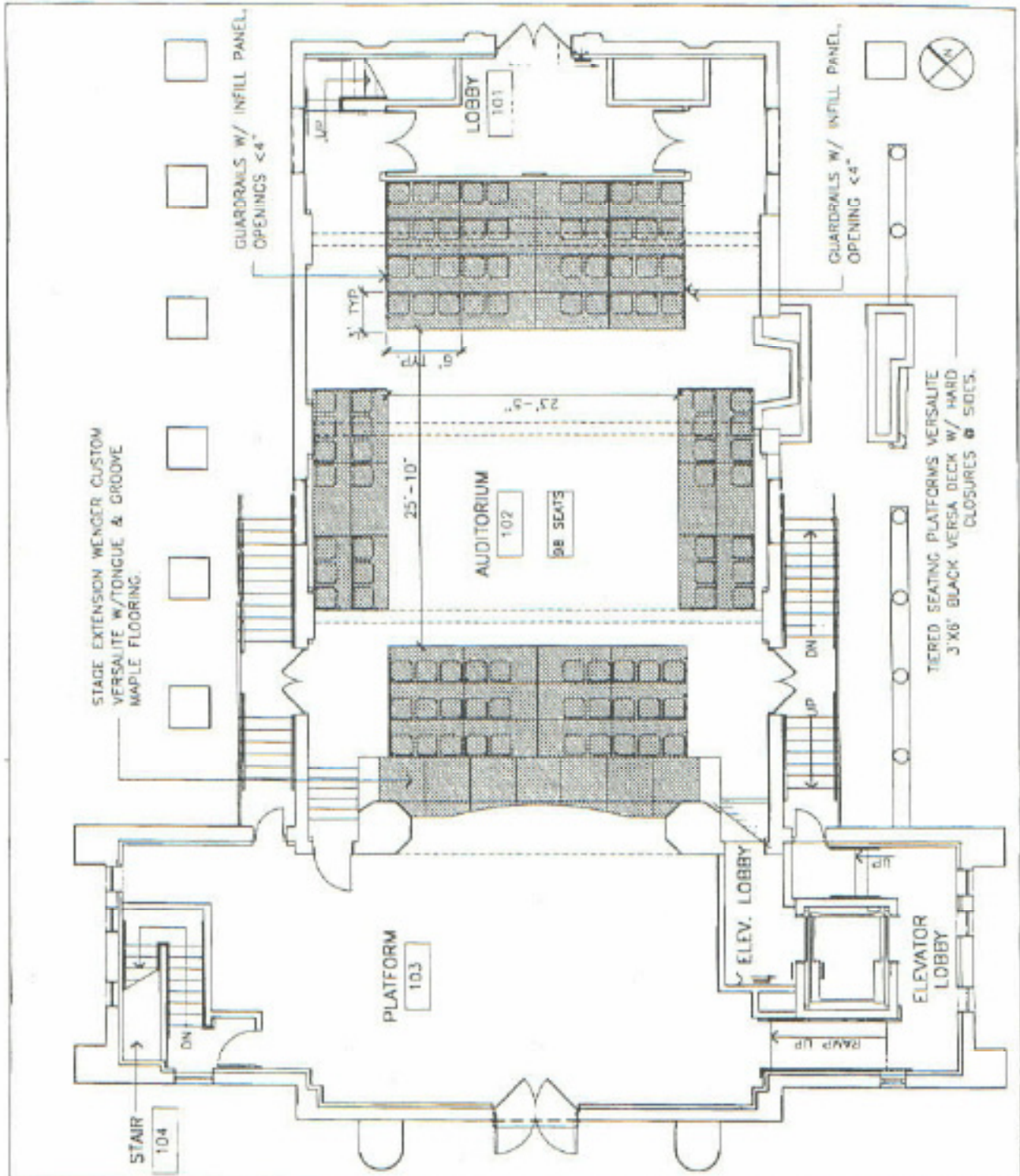
JOB # 9826

SHEET NUMBER

**STG-1**



# Miles Playhouse Arena Configuration

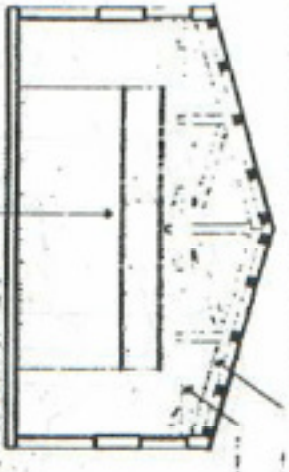


**JOHN ASH GROUP**  
 8922 HOLLYWOOD BLVD./SUITE 500  
 HOLLYWOOD, CALIFORNIA 90028  
 323 769-0980 FAX 323 769-0989

**MILES MEMORIAL PLAYHOUSE**  
**CENTRAL STAGE SEATING DIAGRAM**  
 Santa Monica, California

DATE: 04/13/99  
 SCALE: N.T.S.  
 JOB # 9444  
 SHEET NUMBER  
**STG-2**

28 ft from rear wall to edge of stage extension

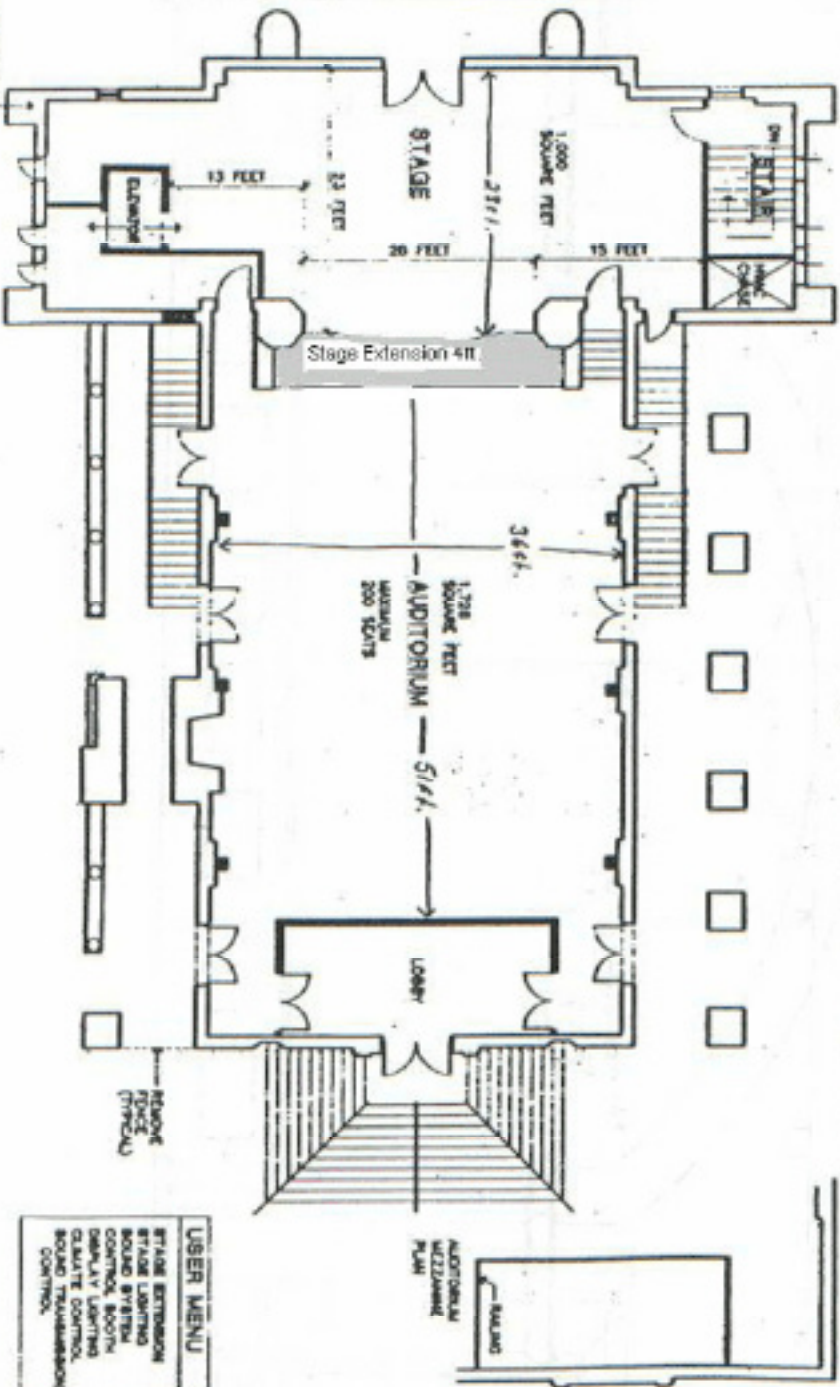


NEW LIGHTING POSITIONS AT 1ST TRUST EAST OF MEZZANINE  
 NEW LIGHTING POSITIONS AT 2ND TRUST EAST OF MEZZANINE

NEW EAST AT MAIN ENTRANCE  
 CROSS SECTION OF AUDITORIUM  
 EXTRACT DOORS ROOM

**BASIC RENOVATION**

1. REPAIR STRUCTURE
2. REPAIR ELECTRICAL SYSTEM
3. REPLACE HEATING & COOLING SYSTEM
4. REPAIR PLUMBING SYSTEM
5. ORDERED MAINTENANCE (WOODWORK, FLOORING, PAINT)
6. ADD FIRE & LIFE SAFETY SYSTEMS
7. REPAIR HORIZONTAL SLATS
8. REMOVE ACCESSIBILITY BARriers
9. REPLACE HOUSE CURTAIN
10. REMOVE BRIS
11. LABORATORY, PROJECTION SCREENS, PATIO & SCENERY
12. ASBESTOS REMOVAL
13. STRAINWAY TO LOWER LEVELS
14. SECURITY SYSTEM



ROOF LINE ABOVE

FIRST FLOOR PLAN

SK-1

MEALS  
 LABORATORY,  
 PLAYHOUSE

EXTRACT DOORS  
 ROOM  
 1st FLOOR  
 2nd FLOOR

AUDITORIUM  
 MEZZANINE  
 PLAN

SK-1

SK-1

SK-1

SK-1



Stage depth: 28' - stage extension to rear wall.  
26' deep - stage extension to rear curtain.

Stage Width: 24 ft - sight lines

Grid Height Above Stage: 13'4"  
Cyc or fabric width full stage: 29'  
21' between proscenium arch

