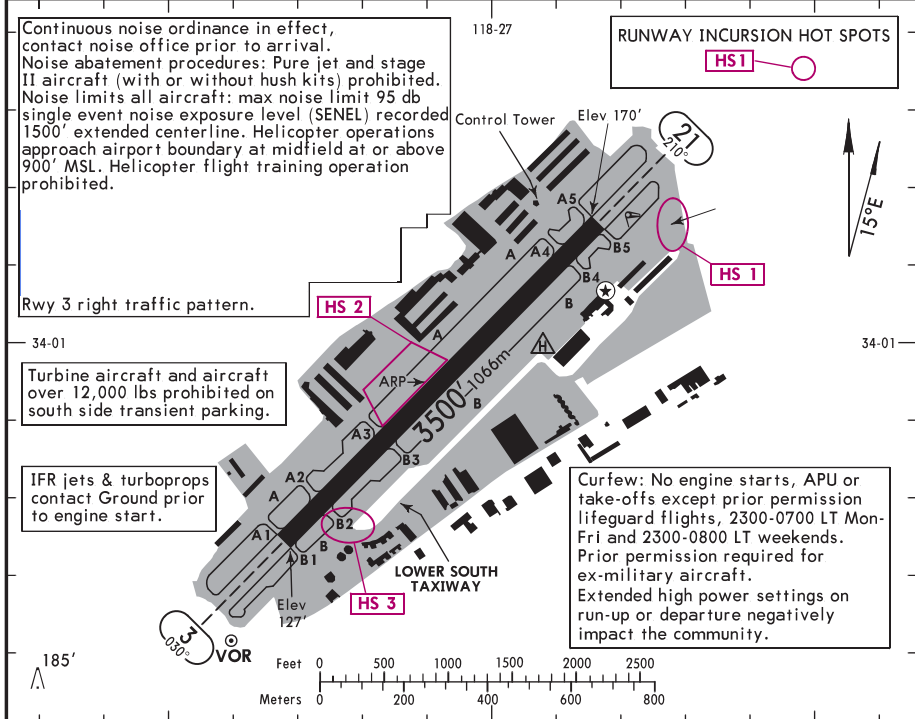


KSMO/SMO
 Apt Elev **170'**
 N34 00.9 W118 27.1

JEPPESSEN
 1 DEC 17 (10-9) Eff 7 Dec

SANTA MONICA, CALIF
SANTA MONICA MUN

ATIS (ASOS when Twr inop) 119.15 (Limited) VOT 113.9	*SANTA MONICA Ground 121.9	*Tower CTAF 120.1	UNICOM 122.95	SOCAL Departure (R) 125.2
---	--------------------------------------	-----------------------------	---------------	-------------------------------------



ADDITIONAL RUNWAY INFORMATION

RWY	USABLE LENGTHS				WIDTH
	Threshold	Landing Beyond	Glide Slope	TAKE-OFF	
3 ① 21	MIRL REIL VASI-L (angle 3.42°) grooved				150' 46m
	MIRL REIL ② PAPI-L (angle 3.50°) grooved				

- ① Prior permission required for dual wheel aircraft in excess of 60,000 lbs certified max landing weight.
- ② PAPI unusable beyond 5° right of centerline.

RUNWAY INCURSION HOT SPOTS **HS 1**

For information only, not to be construed as ATC instructions.

HS 1 The run-up area is a non-movement area.

HS 2 Aircraft exiting FBO ramp should exercise caution not to miss the turn onto Twy A and mistakenly proceed onto the runway safety area.

HS 3 Area might not be visible from control tower. Busy intersection.

TAKE-OFF (AMEND 7)		FOR FILING AS ALTERNATE				
Rwy 3, 21		RNAV (GPS) Y Rwy 3	RNAV (GPS) Rwy 21	RNAV (GPS) Z Rwy 3	VOR-A	
1 & 2 Eng	USE TOPANGA DEPARTURE	A	900-2	1000-2	1300-2	NA
		B				
3 & 4 Eng		C	900-2½	1000-2½	NA	
		D				

DIVERSE VECTOR AREA (Radar Vectors) (AMEND 1)

Rwy 3: Heading as assigned by ATC; requires minimum climb of 330'/NM to 1100'.
 Rwy 21: Heading as assigned by ATC; requires minimum climb of 350'/NM to 3900'.

Reproduced with permission of Jeppesen. NOT FOR NAVIGATIONAL USE. © 2017