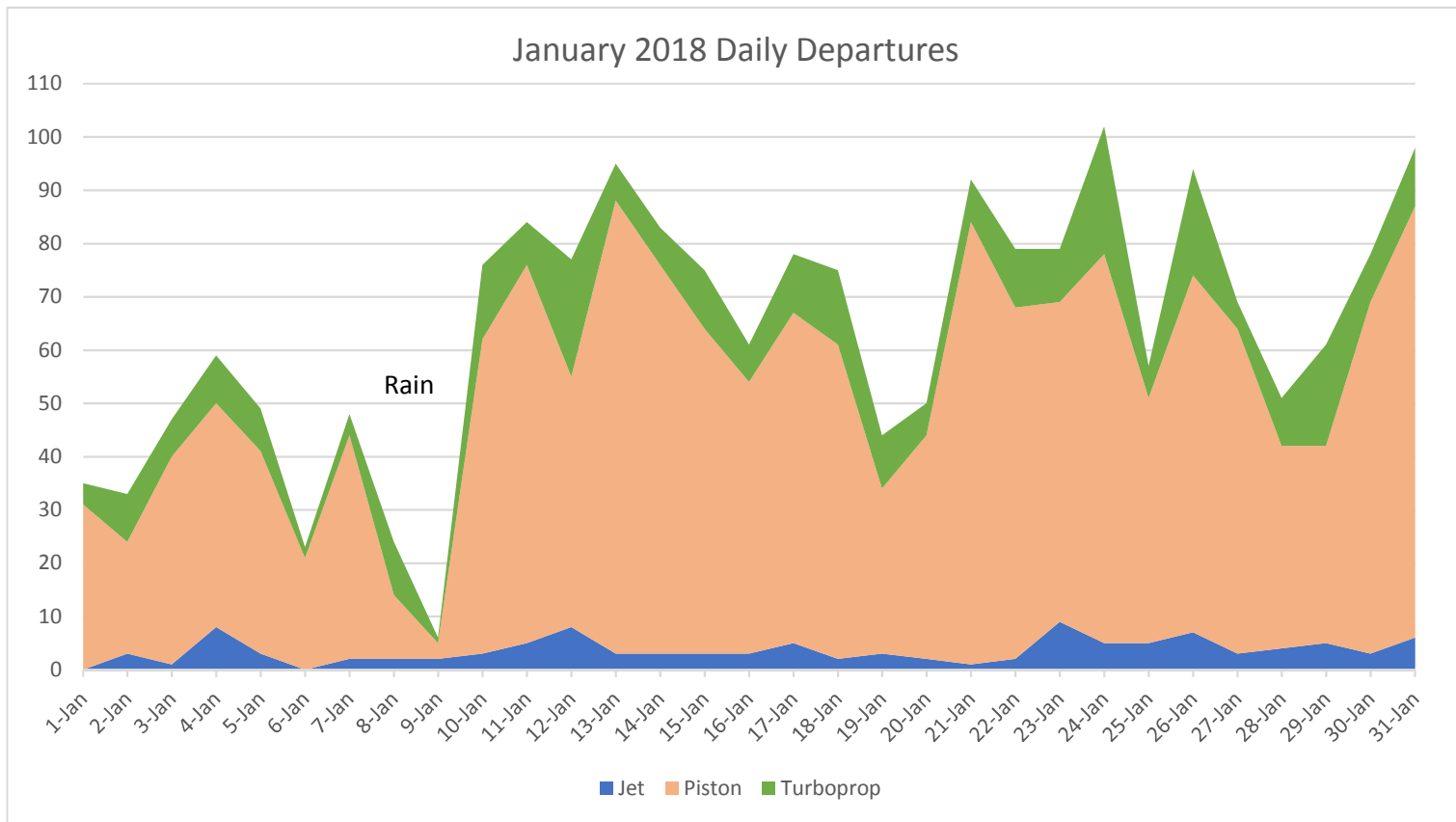
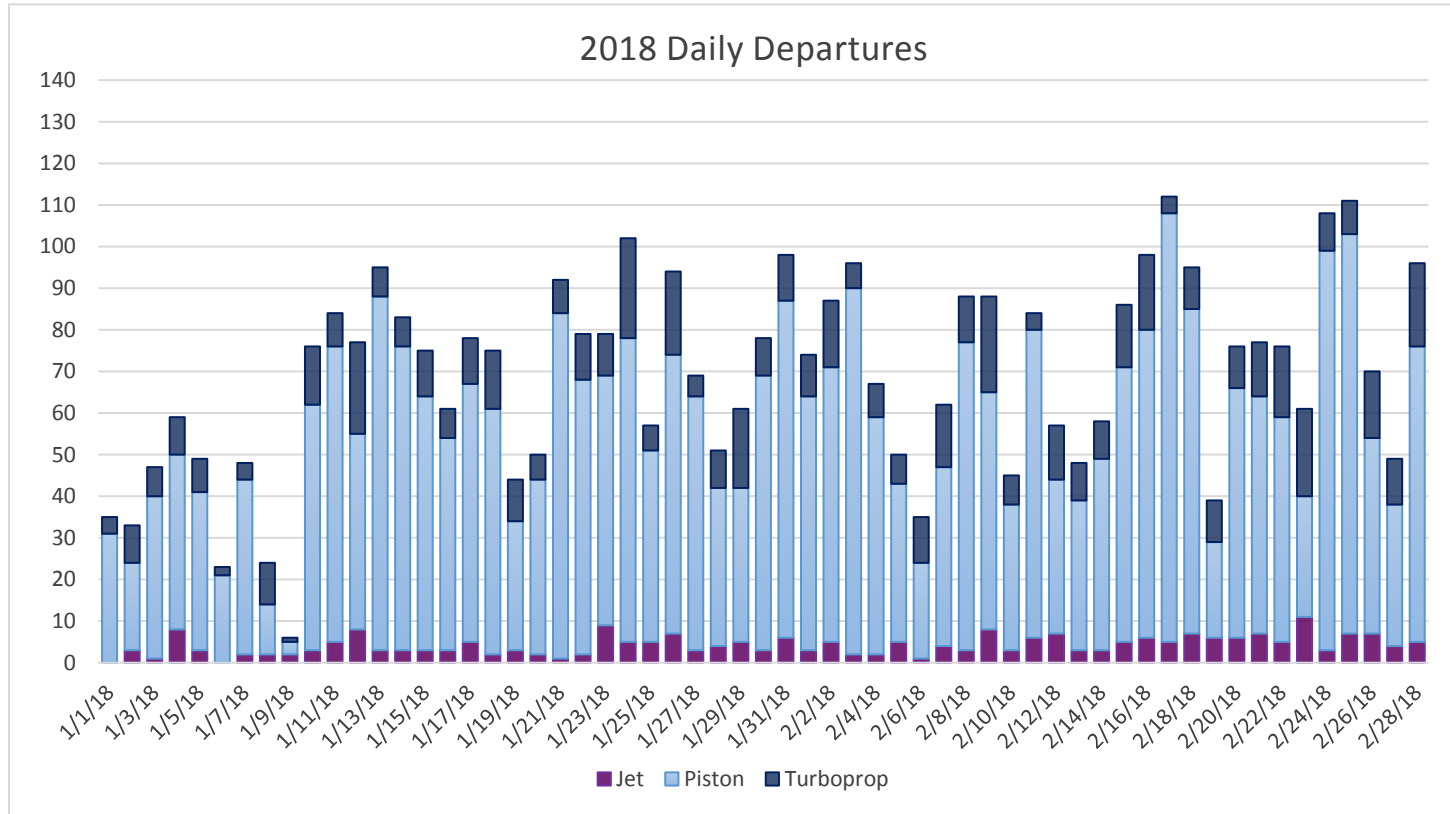


January Comparison Departure Operations

Month	Helicopter		Jet		Piston		Turboprop		Total
January 2018	134	33%	111	-84%	1568	6%	303	9%	2,116
Prior 2 Year Average	101		696		1476		279		2,551
January 2017	109		692		1486		244		2,531
January 2016	92		699		1466		314		2,571

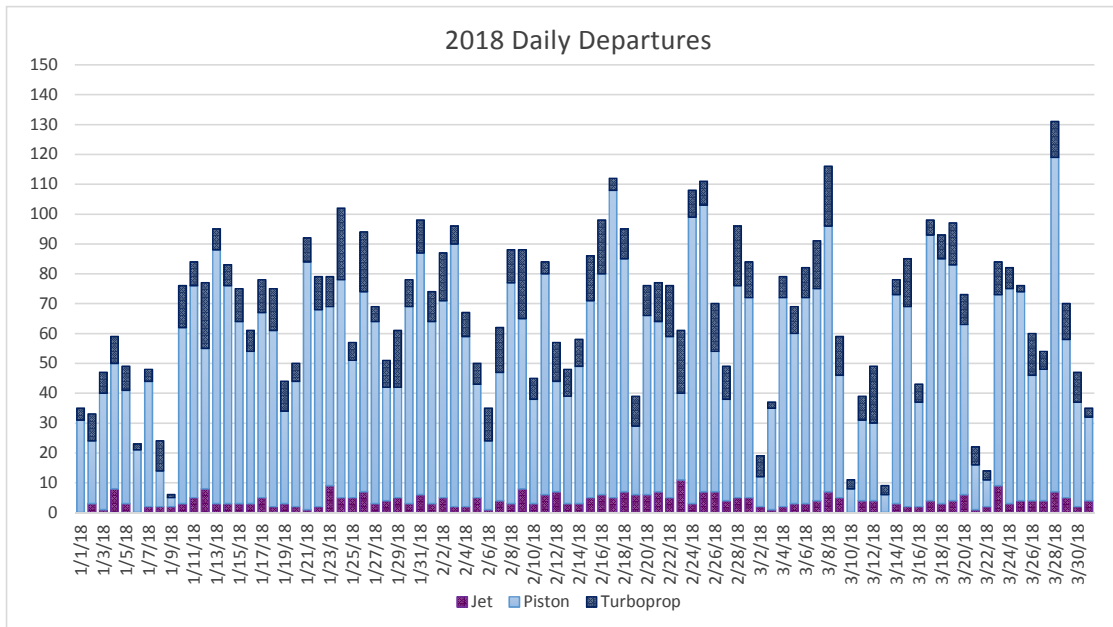


Monthly Comparison of Departure Operations



Month	Helicopter	Jet	Piston	Turboprop	Total
February 2016	107	775	2,052	275	3,209
February 2017	72	599	1,245	197	2,113
Prior 2 February months Avg.	90	687	1,649	236	2,661
February 2018	126	139	1,623	331	2,219

Monthly Comparison of Departure on 3500' Runway

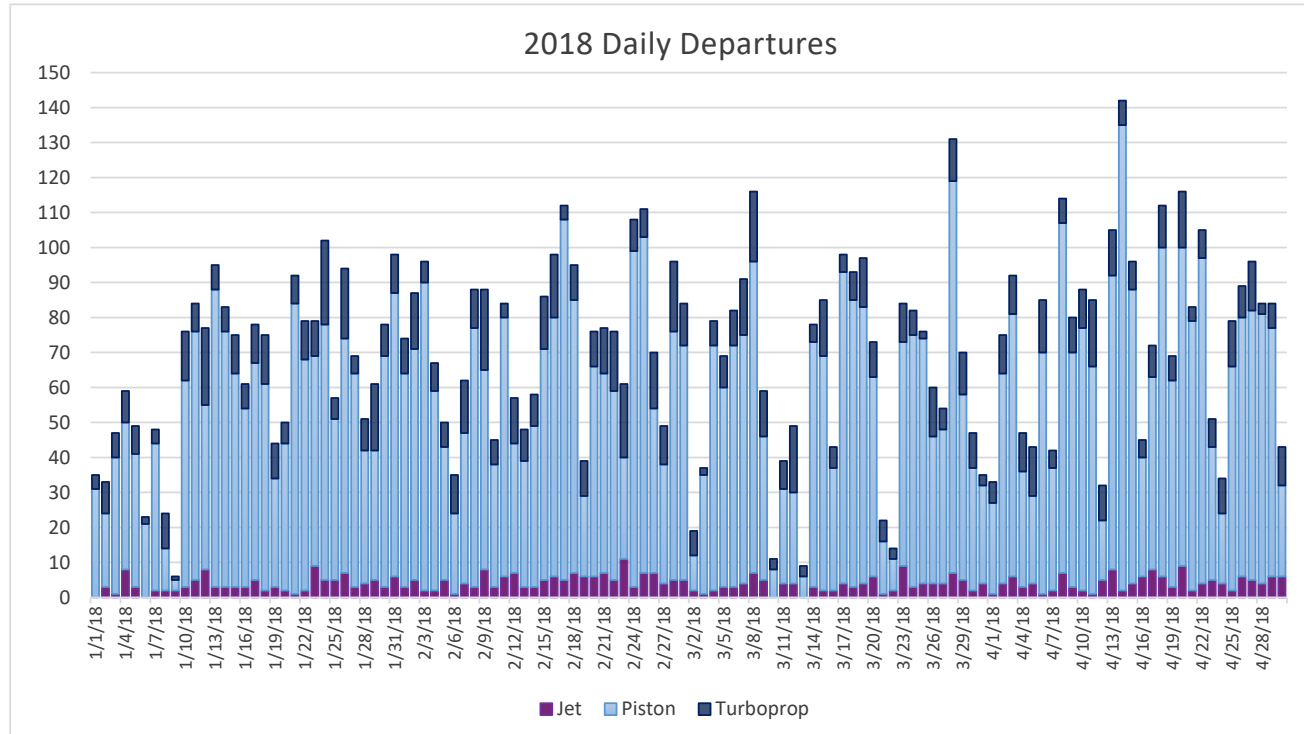


Month	Helicopter		Jet		Piston		Turboprop		Total
March 2016	102		788		1,717		301		2,908
March 2017	130		729		1,720		334		2,913
Prior 2 March months Avg.	116		759		1,719		318		2,911
March 2018	155	34%	109	-86%	1,598	-7%	279	-12%	2,141

Month	Helicopter		Jet		Piston		Turboprop		Total
February 2016	107		775		2,052		275		3,209
February 2017	72		599		1,245		197		2,113
Prior 2 February months Avg.	90		687		1,649		236		2,661
February 2018	126	41%	139	-80%	1,623	-2%	331	40%	2,219

Month	Helicopter		Jet		Piston		Turboprop		Total
January 2016	92		699		1,466		314		2,571
January 2017	109		692		1,486		244		2,531
Prior 2 January months Avg.	101		696		1,476		279		2,551
January 2018	134	33%	111	-84%	1,568	6%	303	9%	2,116

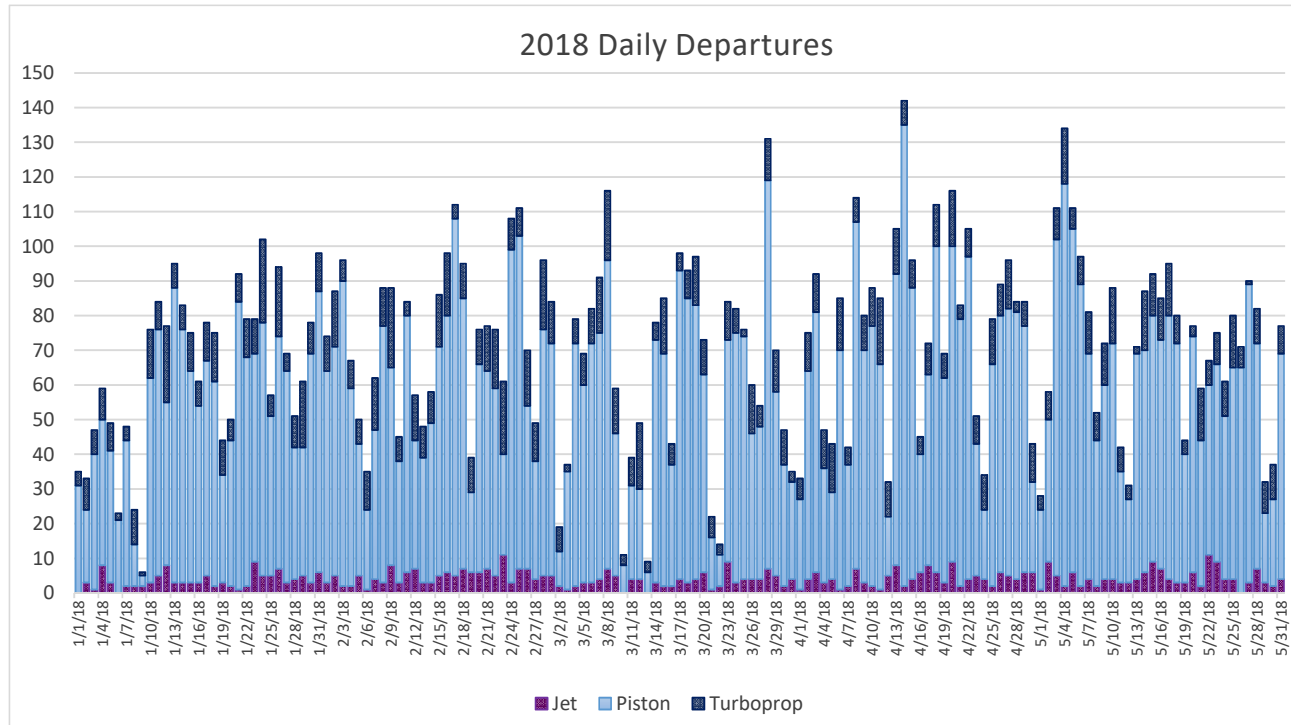
Monthly Comparison of Departure on 3500' Runway



Month	Helicopter		Jet		Piston		Turboprop		Total
April 2016	136		750		1,879		273		3,038
April 2017	199		677		1,819		314		3,009
Prior 2 April months Avg.	168		714		1,849		294		3,024
April 2018	178	6%	129	-82%	1,898	3%	294	0%	2,499

Month	Helicopter		Jet		Piston		Turboprop		Total
January to April 2017	510		2,697		6,270		1,089		10,566
January to April 2018	593	16%	488	-82%	6,687	7%	1,207	11%	8,975

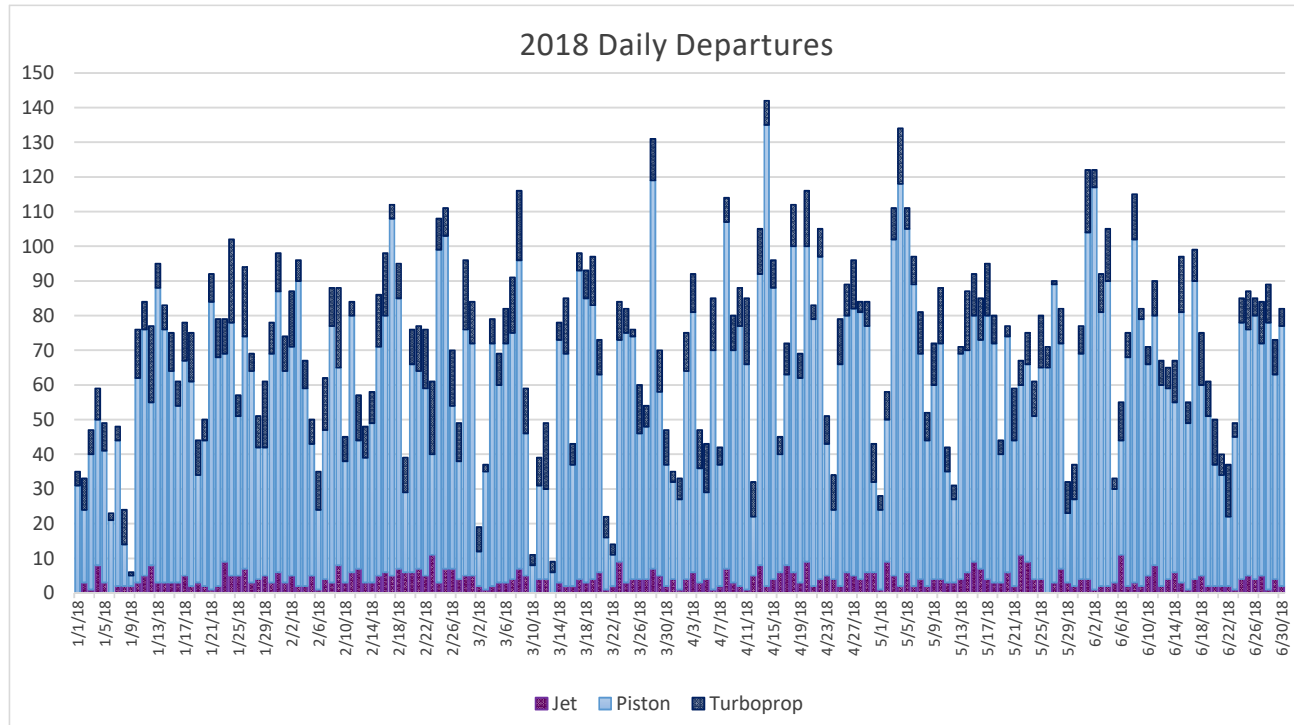
Monthly Comparison of Departure on 3500' Runway



Month	Helicopter		Jet		Piston		Turboprop		Total
May 2016	178		849		1,730		300		3,057
May 2017	128		710		1,523		360		2,721
Prior 2 May months Avg.	153		780		1,627		330		2,889
May 2018	150	-2%	136	-83%	1,848	14%	283	-14%	2,417

Month	Helicopter		Jet		Piston		Turboprop		Total
January to May 2017	638		3,383		7,817		1,449		10,566
January to May 2018	743	16%	602	-82%	8,557	9%	1,490	3%	8,975

Monthly Comparison of Departure on 3500' Runway



Month	Helicopter		Jet		Piston		Turboprop		Total
June 2016	104		725		1,509		264		2,602
June 2017	125		655		1,482		309		2,571
Prior 2 June months Avg.	115		690		1,496		287		2,587
June 2018	154	34%	102	-85%	1,926	29%	281	-2%	2,463

Month	Helicopter		Jet		Piston		Turboprop		Total
January to June 2017	763		4,038		9,299		1,758		10,566
January to June 2018	897	18%	704	-83%	10,483	13%	1,771	1%	8,975